

# MOVENTO Installer's Guide



For detailed videos visit  
[youtube.com/bluminc](https://youtube.com/bluminc)



> For more information visit  
[youtube.com/bluminc](https://youtube.com/bluminc)

**Dimensions in millimeters** (inch equivalents as noted) – Technical specifications subject to change without notice. For more information about installing Blum products, please visit [blum.com](https://blum.com) or call 1-800-438-6788 for customer service. © 2018 Blum, Inc.



Step 1  
First, touch to open drawer.



Step 2  
With the drawer fully extended, reach under the drawer and squeeze the release levers for the locking devices. Then pull drawer straight out.



Step 3  
Carefully remove the synchronization rod. Repeat these steps on the remaining drawers.

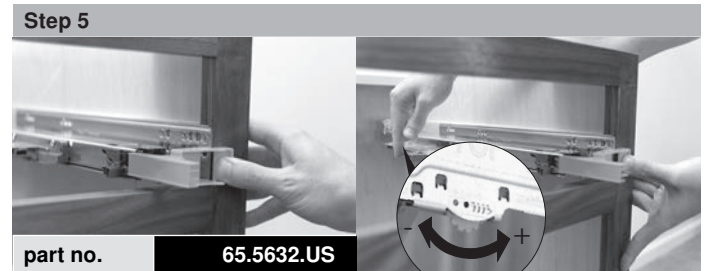
Visit [youtube.com/bluminc](https://youtube.com/bluminc) for more information on how to remove the TIP-ON BLUMOTION synchronization rod video.



Step 4

Now install the cabinet, ensuring that the cabinet remains square and true.

For proper function, it is important that the cabinet does not become racked during installation.



Step 5

part no. **65.5632.US**

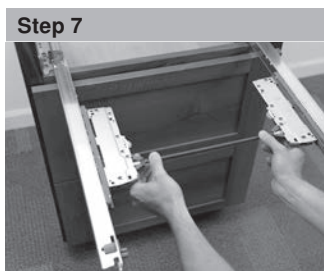
Next, use the orange front gap template to ensure the front gap is set correctly for optimal function of TIP-ON BLUMOTION.

Visit [youtube.com/bluminc](https://youtube.com/bluminc) to watch the TIP-ON BLUMOTION front gap template video.



Step 6

Touch to extend the right and left runner.



Step 7

Insert the synchronization rod.



Step 8

Insert the drawer.



Additional instructions -->

Repeat this process for the other drawers in the cabinet.

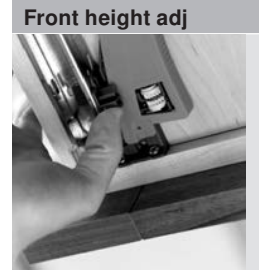
Drawer adjustments



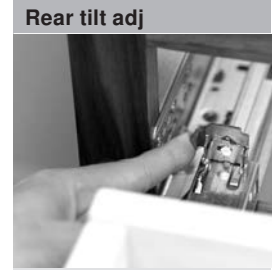
**Front side-to-side adj**  
Rotate side-to-side adjustment left or right equally on both locking devices. Drawer front moves in the same direction as rotation.



**Rear side-to-side adj**  
Rotate the rear side-to-side adjustment left or right to re-align the back of the drawer box with the front.



**Front height adj**  
To raise front - Press up on adjustment tab and push toward back of drawer.

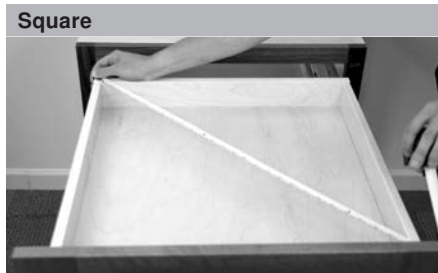


**Rear tilt adj**  
To raise drawer back/tilt front - Rotate gray tilt adjustment lever on the rear of each runner.

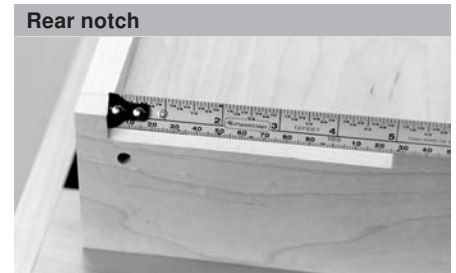
Troubleshooting



**Level**  
Check to ensure that the runners are level, perpendicular to the face of the cabinet, and parallel to each other.



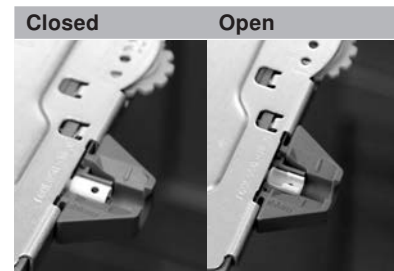
**Square**  
Check drawer box squareness, either by measuring from inside corner to inside corner, or by using a framing square.



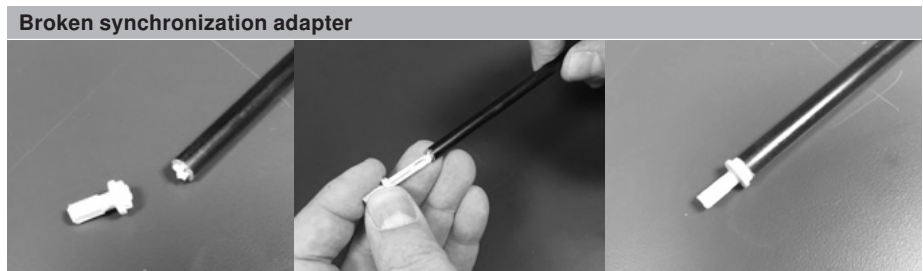
**Rear notch**  
Measure the rear notches of the drawer. Make sure they meet Blum's specifications.

View TIP-ON BLUMOTION section of MOVENTO brochure for further instructions.

Helpful hints



**Closed**      **Open**  
To remove or insert the synchronization rod, the pinions must be put in the open position by touching the drawer front or runners to open them.



**Broken synchronization adapter**  
If a synchronization adapter is broken, it can easily be replaced by simply sliding another in its place.

Front gap template alternative

**TIP-ON BLUMOTION depth adjustment with a combination square**

**Top view**

763/769 (X = runner setback + 32 (1-1/4"))  
769R (X = runner setback + 17.5 (11/16"))

If a front gap template is not present on the job site, a combination square can be used to set the front gap. Please refer to the MOVENTO brochure for more information.